

# HEALTHY LIVING THROUGH RECREATIONAL OPEN SPACE

1,208-acre borough  
3,239 residential units  
109 acres commercial,  
mixed-use and office  
25-acre community  
resource area  
487 acres dedicated to  
parks, parkways, and  
open space (40% of land)



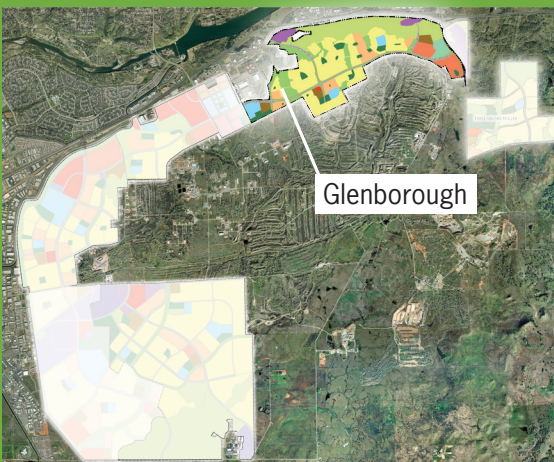
**GLENBOROUGH** is designed to provide healthy living through recreational activities. The backbone of the borough is a 487-acre system of parks, parkways and open space, which includes more than 50 acres of active parks, the Alder Creek Parkway, a Community Resource Area, oak woodlands, and miles of trails that link to the regional trail system. Glenborough offers a diverse mix of housing options with emphasis on lower densities—single-family homes on large lots.

EASTON





**GLENBOROUGH** is designed to promote healthy living through physical activity. The various neighborhoods, retail and commercial areas are linked by a network of separated sidewalks and trails to encourage walking and bicycling.



This brochure is for informational purposes only and preliminary in nature. Site plans and maps are artists' conceptions and not to scale. All uses, dimensions and amenities are subject to change without notice or obligation.





## Parks and Open Space

Eighteen active parks throughout Glenborough surround residents with opportunities for recreation.

Parks range in size from .2 acre to more than 12 acres – simple seating/landscape areas to regulation soccer and ballfields. Restoration of Alder Creek will help protect, preserve and restore water quality, native species and watershed function.



## Employment Opportunities

Glenborough offers 108 acres of mixed-use and commercial areas, providing opportunities for employment close to high-quality housing. The neighboring borough of Easton Place offers additional business, retail, dining and mixed-use opportunities.



## Mix of Housing Options

The 3,239 residential units of Glenborough are primarily medium and low density.

A variety of home sizes and styles will attract a healthy diversity of income levels, ages and household makeups.

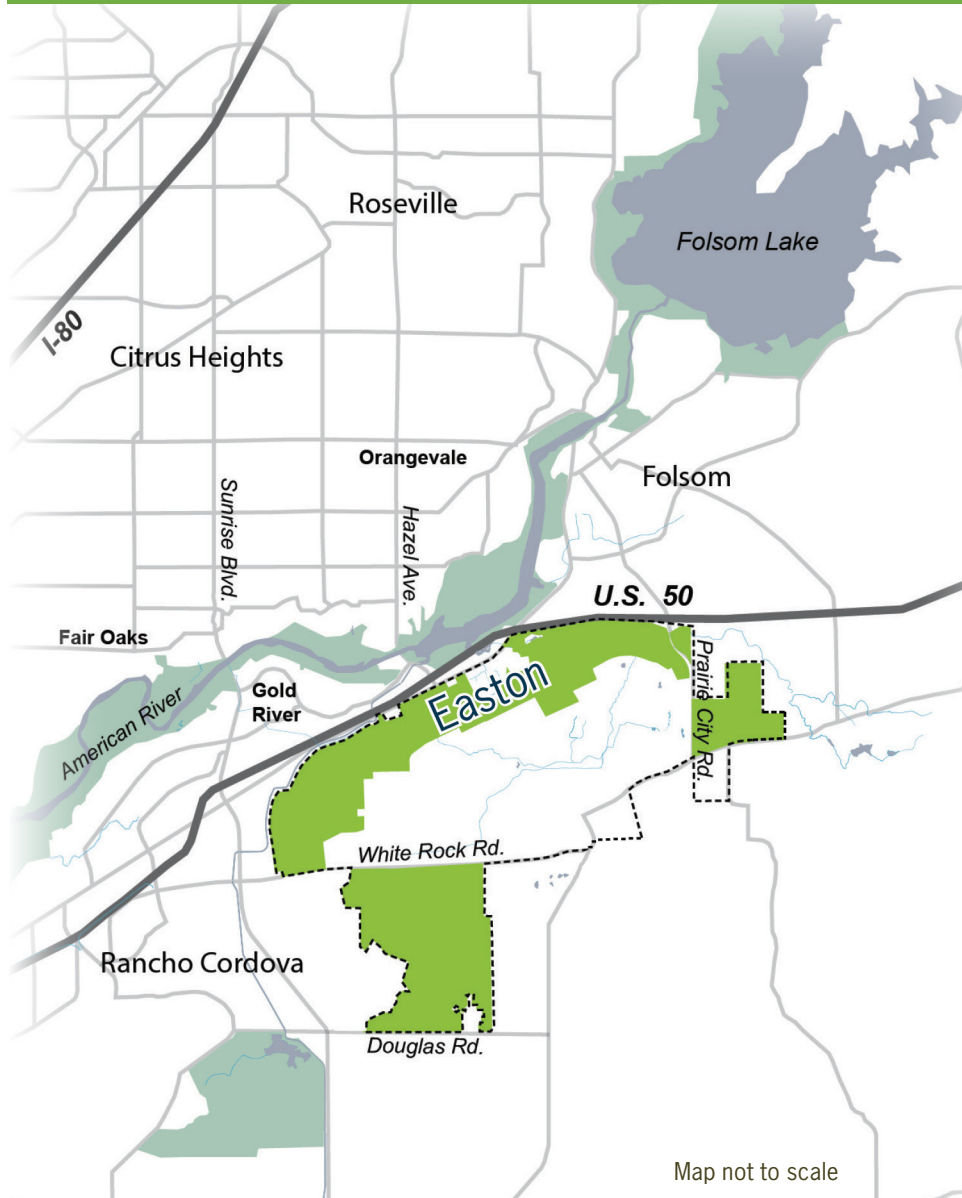


## Regional Connectivity

Glenborough is designed with a comprehensive, hierarchical street network that includes major arterial streets, collector roads and landscaped thoroughfares. These allow users to easily access services within Easton, as well as public transit and freeways for regional connectivity.



## AN INNOVATIVE PLAN



Easton brings to the Sacramento region a living blueprint for sustainability, providing a balance of land uses to meet the region's future needs for homes, jobs, transit, commerce and recreation



EASTON  
DEVELOPMENT COMPANY, LLC

1180 Iron Point Rd. Suite 350, Folsom, CA 95630

916 351 8555

[www.easton-ca.com](http://www.easton-ca.com)