

RIO DEL ORO

DIVERSE NEIGHBORHOODS WOVEN TOGETHER BY COMMUNITY-WIDE OPEN SPACE

2,312 acres

600+ acres dedicated
to parks and a wetland
preserve

Variety of residential
product types—multi-
family and single-family

Local Town Center and
three retail centers

Employment opportunities
in two business parks and
light industrial space

6,950 residential units,
1.9 million square feet of
non-residential units



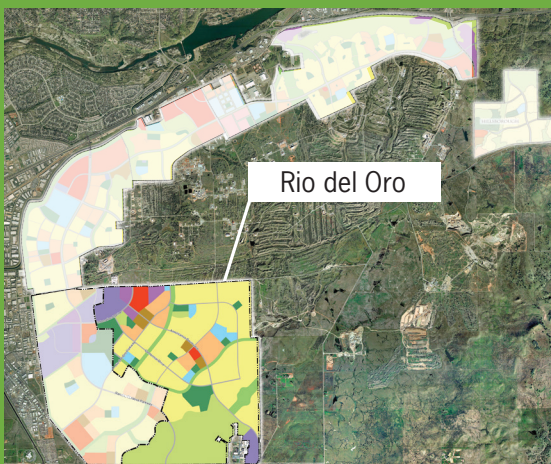
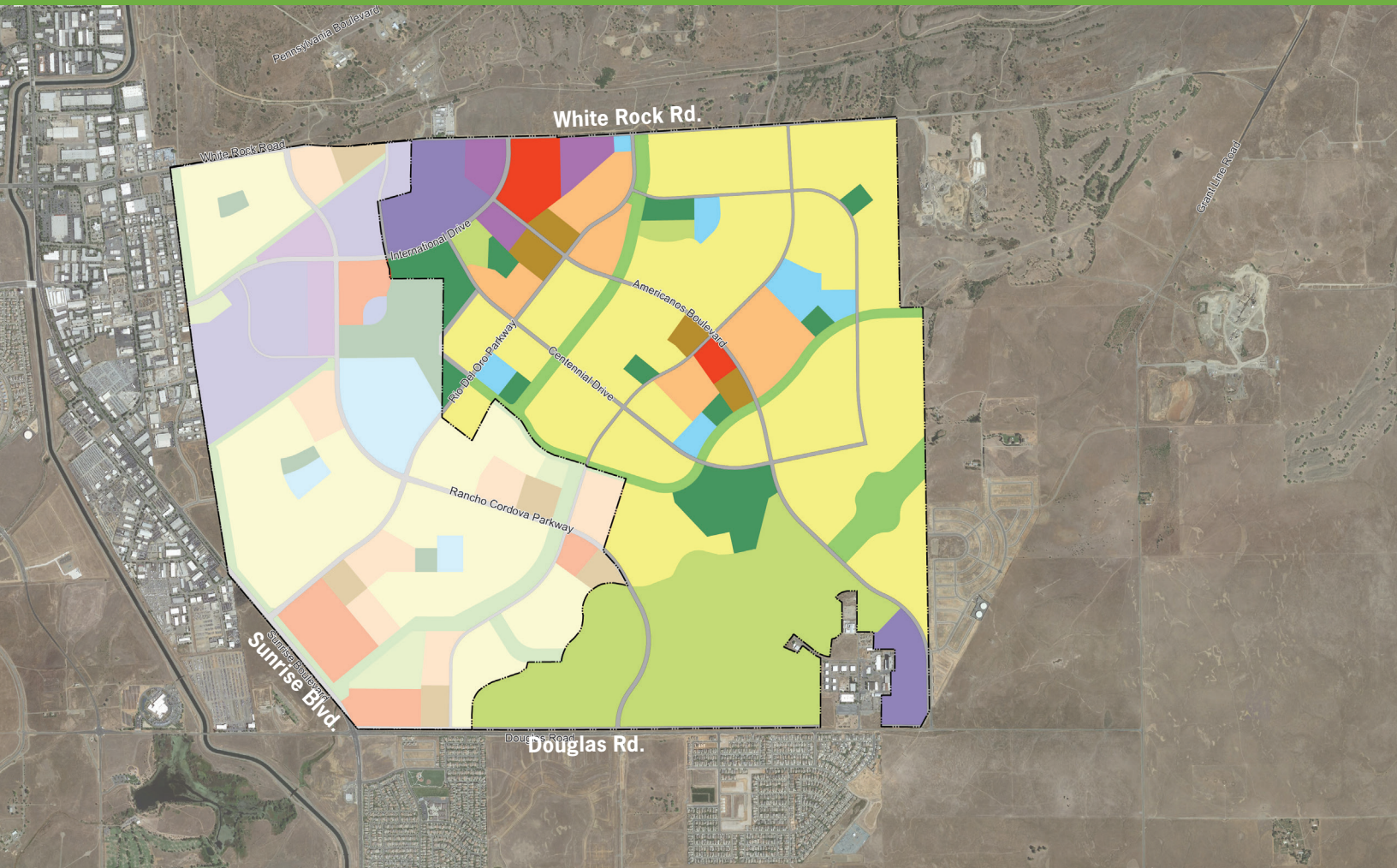
Rio del Oro is a community of neighborhoods within a fabric of open spaces.

One third of its acreage is dedicated to a green network of linear parks, open space areas, neighborhood parks and regional parks. These areas are balanced by housing choices of all income levels, as well as a local Town Center, regional and neighborhood-serving retail centers, commercial, light industry and office space.

EASTON

RIO DEL ORO

RIO DEL ORO is a comprehensive self-sustaining community with all the elements of a great lifestyle: abundant open space, a mix of housing choices, community and regional serving retail and employment centers and more.



This brochure is for informational purposes only and preliminary in nature. Site plans and maps are artists' conceptions and not to scale. All uses, dimensions and amenities are subject to change without notice or obligation.



Parks and Open Space

Pedestrian and bicycle access are major design elements of Rio del Oro. This network connects neighborhoods with work and retail areas. Green areas link to a large open space preserve along the south side of the community, which celebrates and protects Rio del Oro's existing natural resources.



Employment Opportunities

Rio del Oro includes two retail commercial centers, each designed with its own character. In addition, there is significant commercial space intended for research and development, offices and light manufacturing. The plan provides the framework for regional economic vitality.



Mix of Housing Options

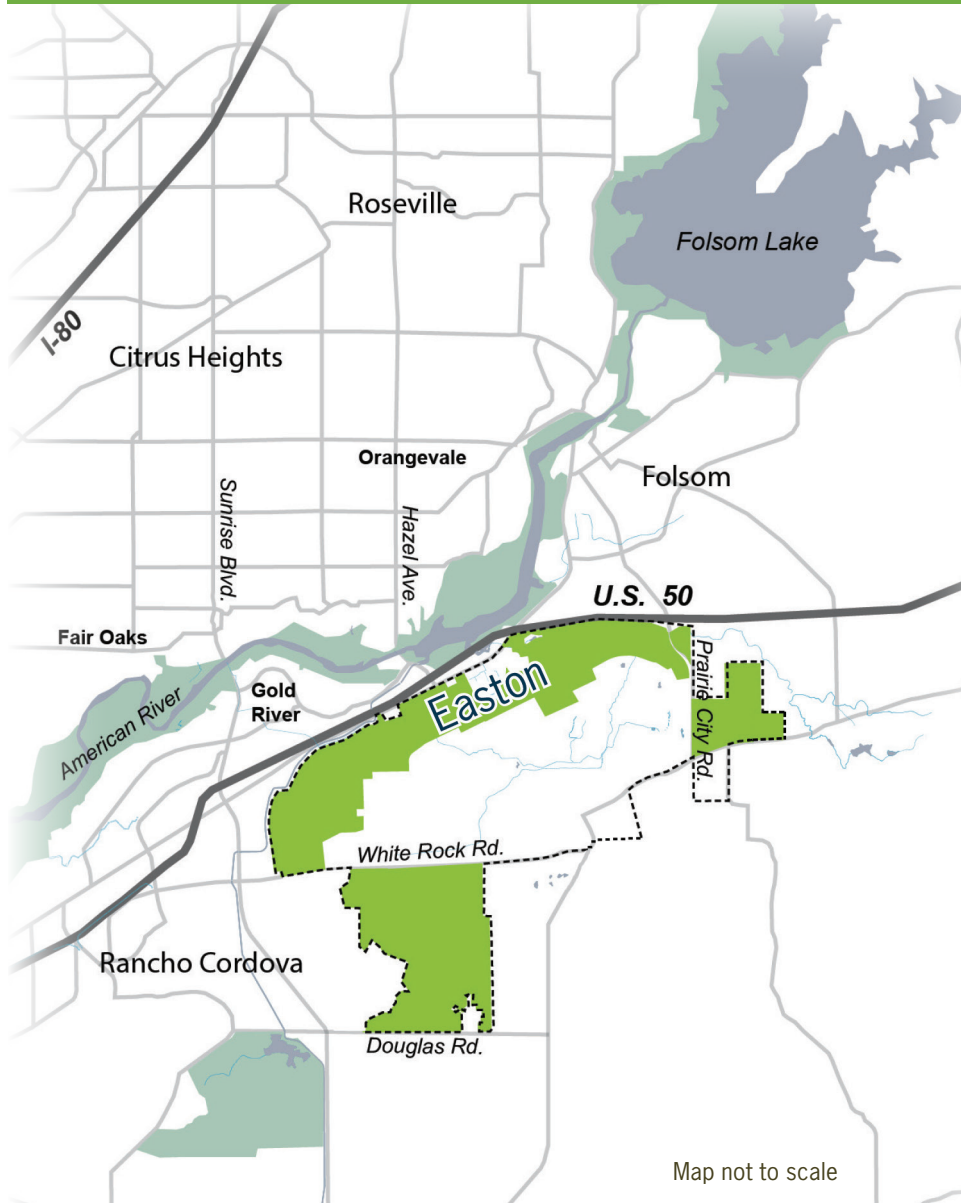
Rio del Oro offers many home styles tailored to a broad variety of lifestyles and preferences. High-, medium- and low-density residential units are all included in the plan.



Regional Connectivity

The overall transportation framework is based on a hierarchical system that allows users easy access to neighborhoods and services within the community. As with all Easton neighborhoods, walking and bicycling are encouraged.

AN INNOVATIVE PLAN



Easton brings to the Sacramento region a living blueprint for sustainability, providing a balance of land uses to meet the region's future needs for homes, jobs, transit, commerce and recreation



EASTON
DEVELOPMENT COMPANY, LLC

1180 Iron Point Rd. Suite 350, Folsom, CA 95630

916 351 8555

www.easton-ca.com